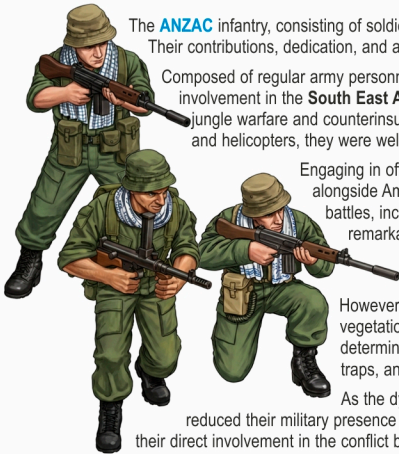




30
Figure Set

Product Code: **281006**

230328-2



The **ANZAC** infantry, consisting of soldiers from **Australia** and **New Zealand**, made a significant impact during the **Vietnam War**. Their contributions, dedication, and adaptability were instrumental in supporting the United States and South Vietnamese forces.

Composed of regular army personnel, the ANZAC infantry units were committed to their alliance with the US and their involvement in the **South East Asia Treaty Organization (SEATO)**. These soldiers underwent rigorous training, specializing in jungle warfare and counterinsurgency operations. Equipped with a variety of weapons and supported by armoured vehicles and helicopters, they were well-prepared for the challenges ahead.

Engaging in offensive operations, patrolling, and search-and-destroy missions, the ANZAC infantry fought alongside American, South Vietnamese, and other allied forces. They encountered the enemy in major battles, including the renowned **Battle of Long Tan**, where a small Australian force demonstrated remarkable resilience and successfully repelled a larger enemy attack.

The ANZAC infantry's contributions were significant. Their expertise in jungle warfare, adaptability to the harsh environment, and development of effective tactics proved invaluable. However, they faced considerable challenges, enduring extreme heat, monsoons, and dense vegetation. The soldiers' physical and mental well-being was tested, and they contended with determined tactics employed by the Viet Cong and North Vietnamese Army, including ambushes, booby traps, and guerrilla warfare.

As the dynamics of the war evolved and public sentiment shifted, Australia and New Zealand gradually reduced their military presence in Vietnam starting in 1971. The ANZAC infantry units eventually withdrew, marking the end of their direct involvement in the conflict by early 1973. Both countries redirected their focus to other regional security concerns.

Sample poses can be found on the last page of this assembly instruction



- When you use glue or paint, do not use near a naked flame, and use in a well-ventilated area.
- When assembling this kit, tools including knives are used. Extra care should be taken to avoid personal injury.
- Keep out of reach of small children.

Read carefully and fully understand the instructions before commencing assembly. Model supplied unpainted. Bases, scenery, glue and paint not included. Legend used:



Choices



Optional



No glue



Drill hole



Bend



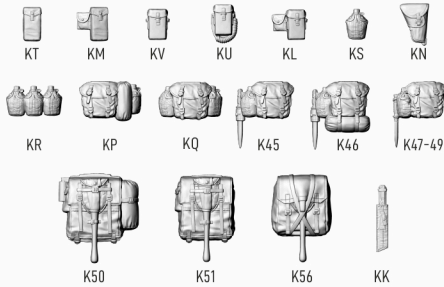
Cut or trim with care

 Please use **ABS Plastic Cement** for our plastic kits.

WARNING

- THIS IS NOT A TOY
- INTENDED FOR COLLECTORS OF AGE 14 AND ABOVE
- CONTAINS SMALL PARTS AND POINTED COMPONENTS
- NOT SUITABLE FOR CHILDREN UNDER 6 YEARS OLD
- MODEL MAY VARY FROM IMAGE ON BOX
- READY TO ASSEMBLE PRECISION MODEL KIT

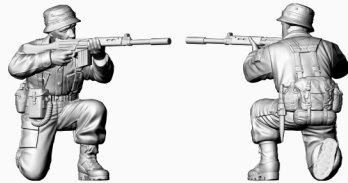
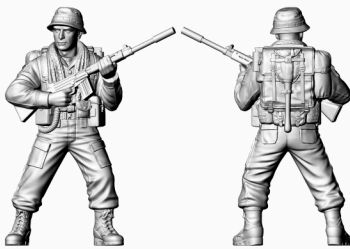
Optional Accessories



KT: P37 Ammo Pouch
KM: P37 Ammo Pouch with FAD
KV: SLR Ammo Pouch
KU: SLR Ammo Pouch, Toggle Rope
KL: SLR Ammo Pouch with FAD
KS: Canteen
KN: L9A1 Pistol Holster
KR: Canteens
KP: Bumpack, Hutchie, Canteen
KQ: Bumpack, Canteens
K45: Bumpack, Canteen, L1A2 Bayonet Frog
K46: Bumpack, Canteen, Hutchie, L1A2 Bayonet Frog

K47 - K49: Bumpack, Canteen, Bayonet
K50: 1968 Large Pack, E-Tool, Hutchie, Smoke Grenades
K51: SLR Ammo Pouch, Toggle Rope
K56: P37 Large Pack, E-Tool
KK: Jungle Machete

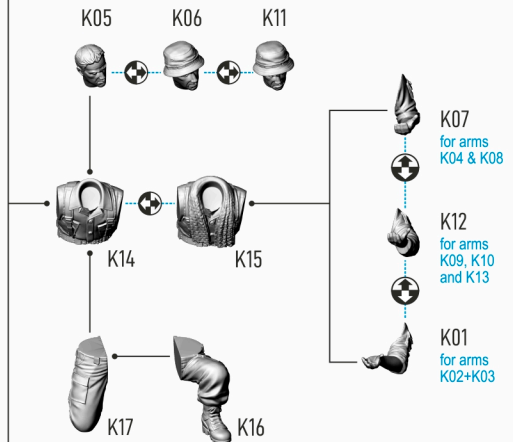
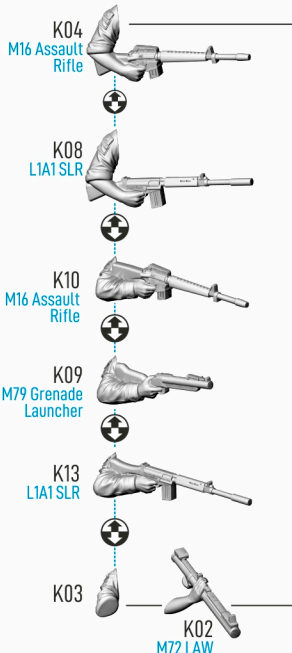
Sample Figures with Various Accessories



FACTS: The inadequate capacity of the US M1956 ammunition pouch led to the hurried reissue of the British 37 and 44 pattern pouches. These were significantly wider and deeper, able to accommodate two SLR's large 20-round box magazines. Diggers required some form of personal ingenuity to complement the pouches with the M1956 equipment, such as cutting slits at the rear of the pouches or the use of wire and string.

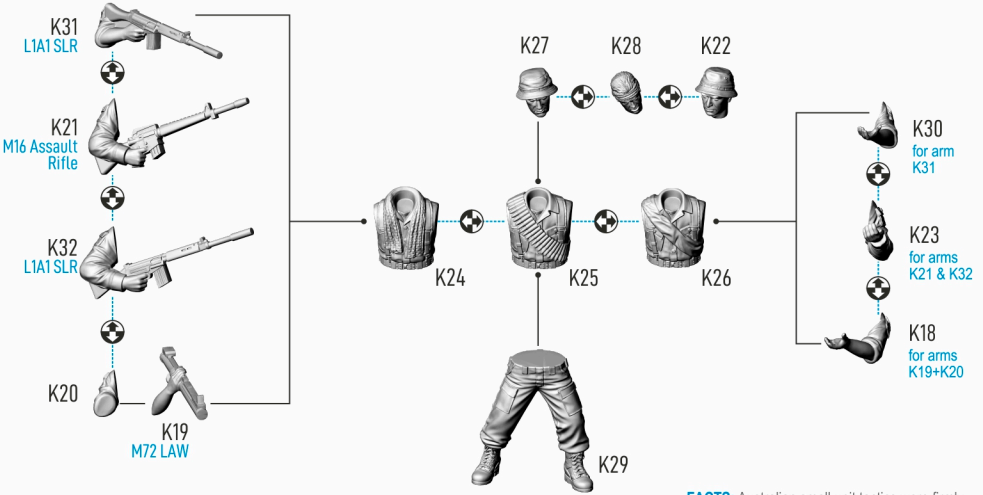
1 Riflemen A

NOTE: The assembly guide for these plastic figures is for reference only. You can explore other combinations to creatively create your own pose.



2

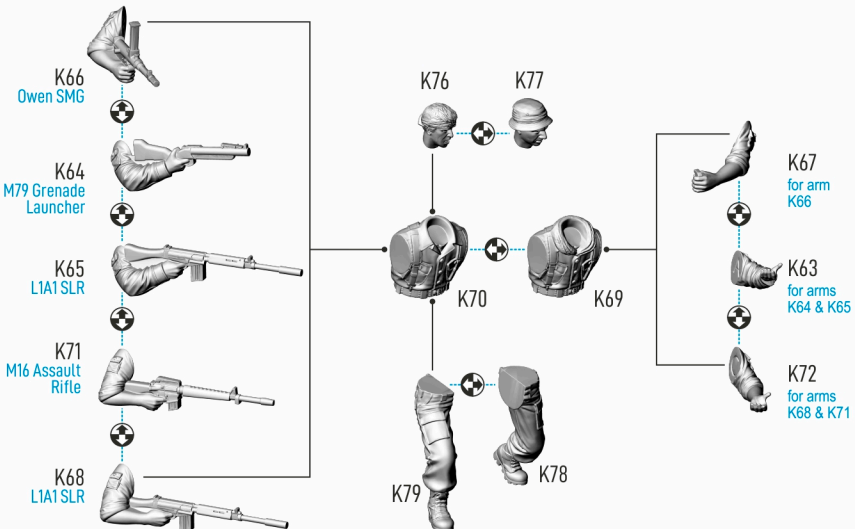
Riflemen B



FACTS: Australian small unit tactics were firmly based on the two basic infantry skills of ambushing and patrolling. Patrolling was considered an offensive strategy in ANZAC doctrine. This was to be the principal method of dominating the countryside and eventually driving the enemy from the province.

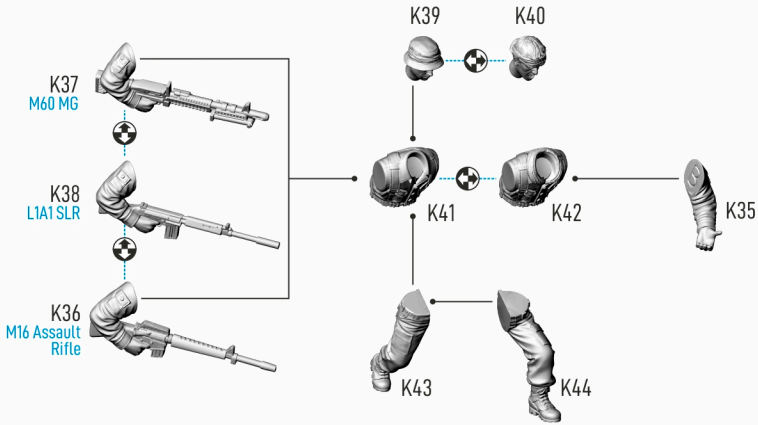
3

Riflemen C



4

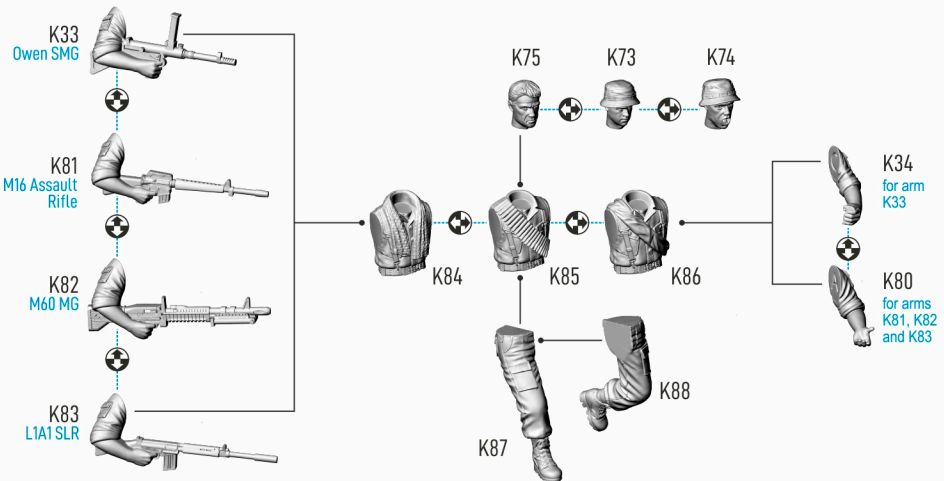
Riflemen D



FACTS: Australia's involvement in Vietnam War began on August 3, 1962. A small group of 30 military advisers represented the vanguard of close to 50,000 Australian servicemen who would serve in Vietnam over the next decade. The Diggers and New Zealanders established a reputation for professionalism and effective soldiering unrivaled in Vietnam. By the early 1960s, they already had experience and mastery of jungle warfare by participating in frequent joint military exercises under the auspices of both the Australia, New Zealand and United States Security Treaty (ANZUS) and the Southeast Asia Treaty Organization (SEATO) treaties.

5

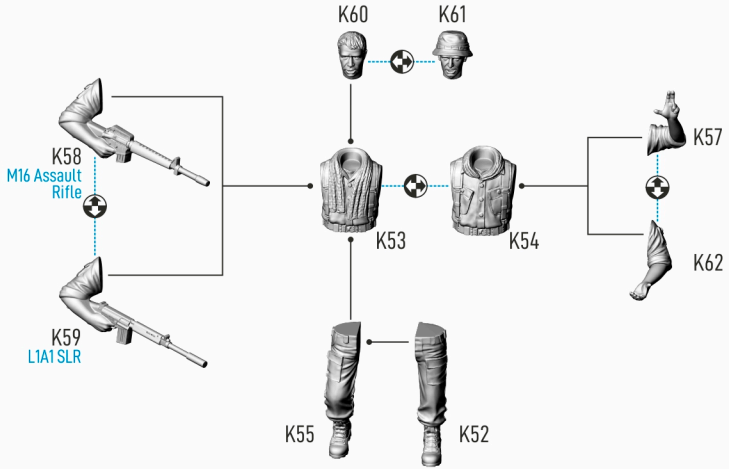
Riflemen E



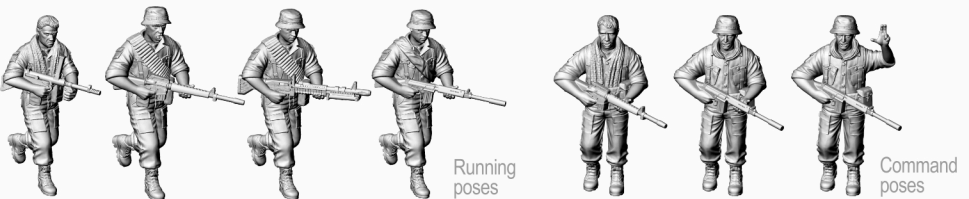
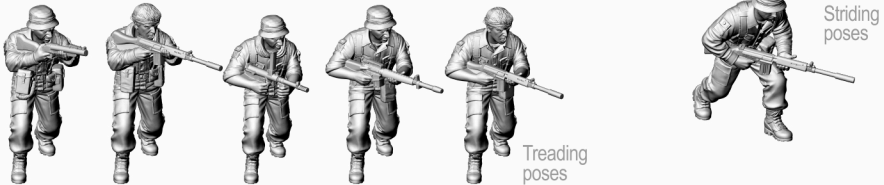
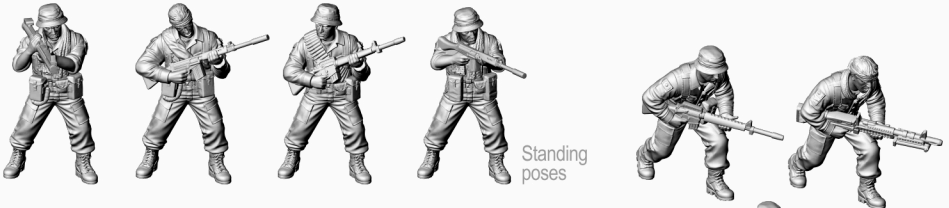
6

Riflemen F

FACTS: Australian troops carried the folding entrenching tool by wedging the blade beneath the pack flap and secure the helve with the two crossed supporting straps. Ammunition belts were carried loosely around the body, protected in plastic sleeves made of cut-air mattress sections. These were some examples of Anzac's ability to "bodgie" his kit to overcome shortcomings.



Sample Poses





280119 Bell UH-1D / UH-1H "Huey" Helicopter



280133 M54A2 5-ton 6x6 Truck



280124 M151A1 1/4 Ton 4x4 Truck



280105 British Centurion MBT Mk 5 / Mk 5/1 (FV4011)



280134 M113A1 APC & Variants



280135 M106A1 Mortar Carrier



280136 M577A1 Command Post Vehicle



280126 US M102 105mm Light Howitzer with Gun Crew



www.rubiconmodelsasia.com



www.rubiconmodels.co.uk



www.rubiconmodelsusa.com