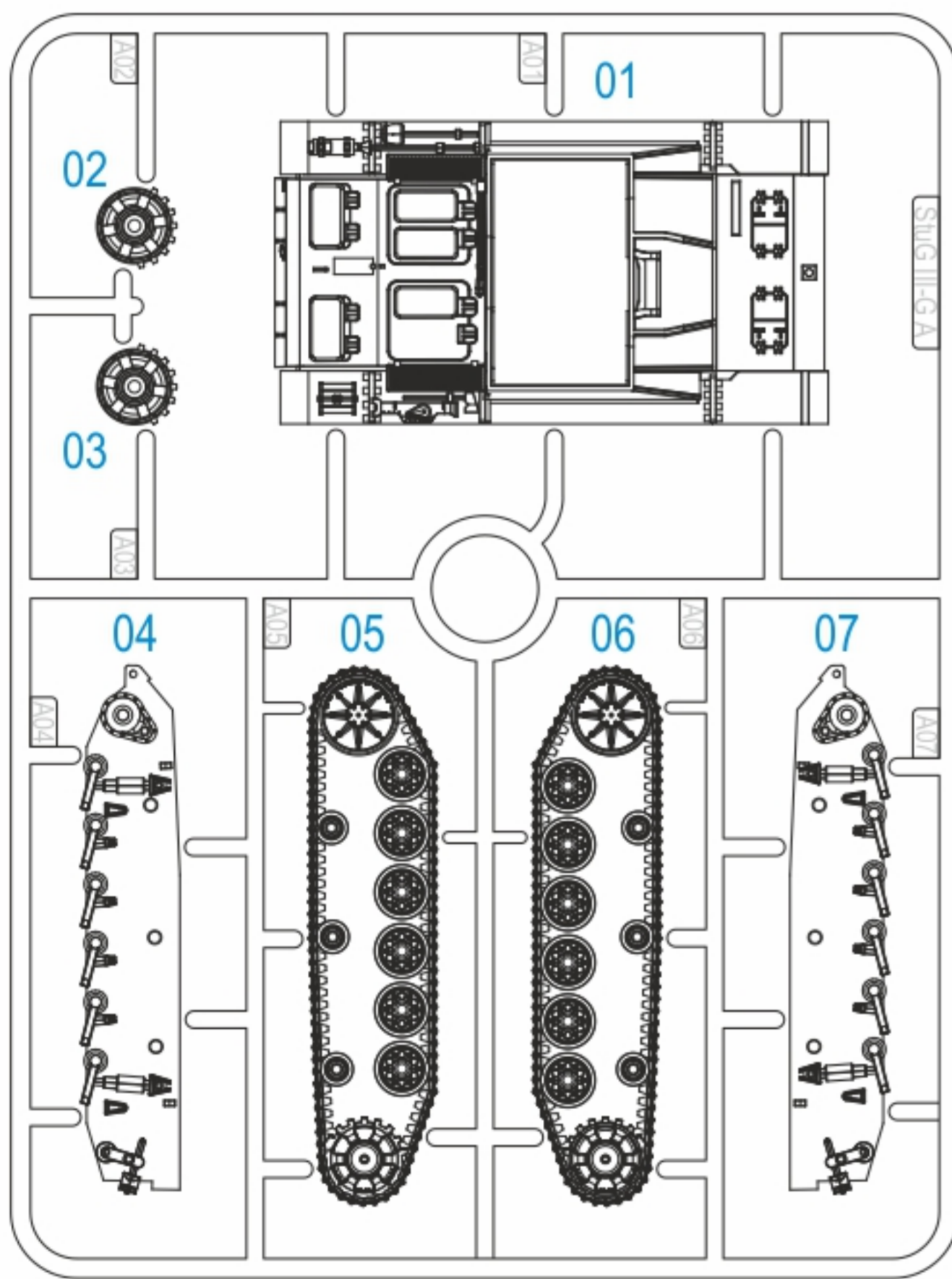


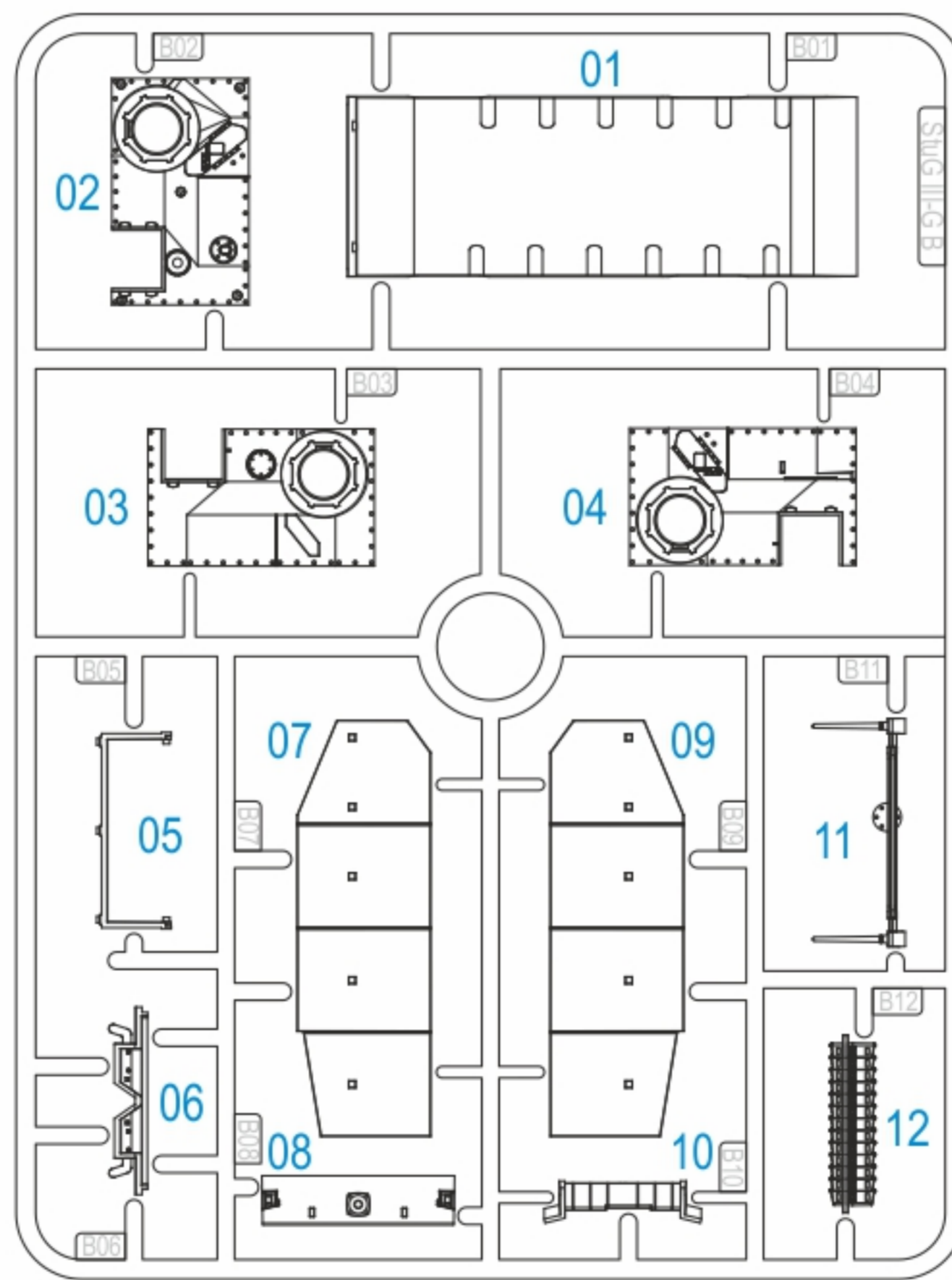


Product Code: 280017

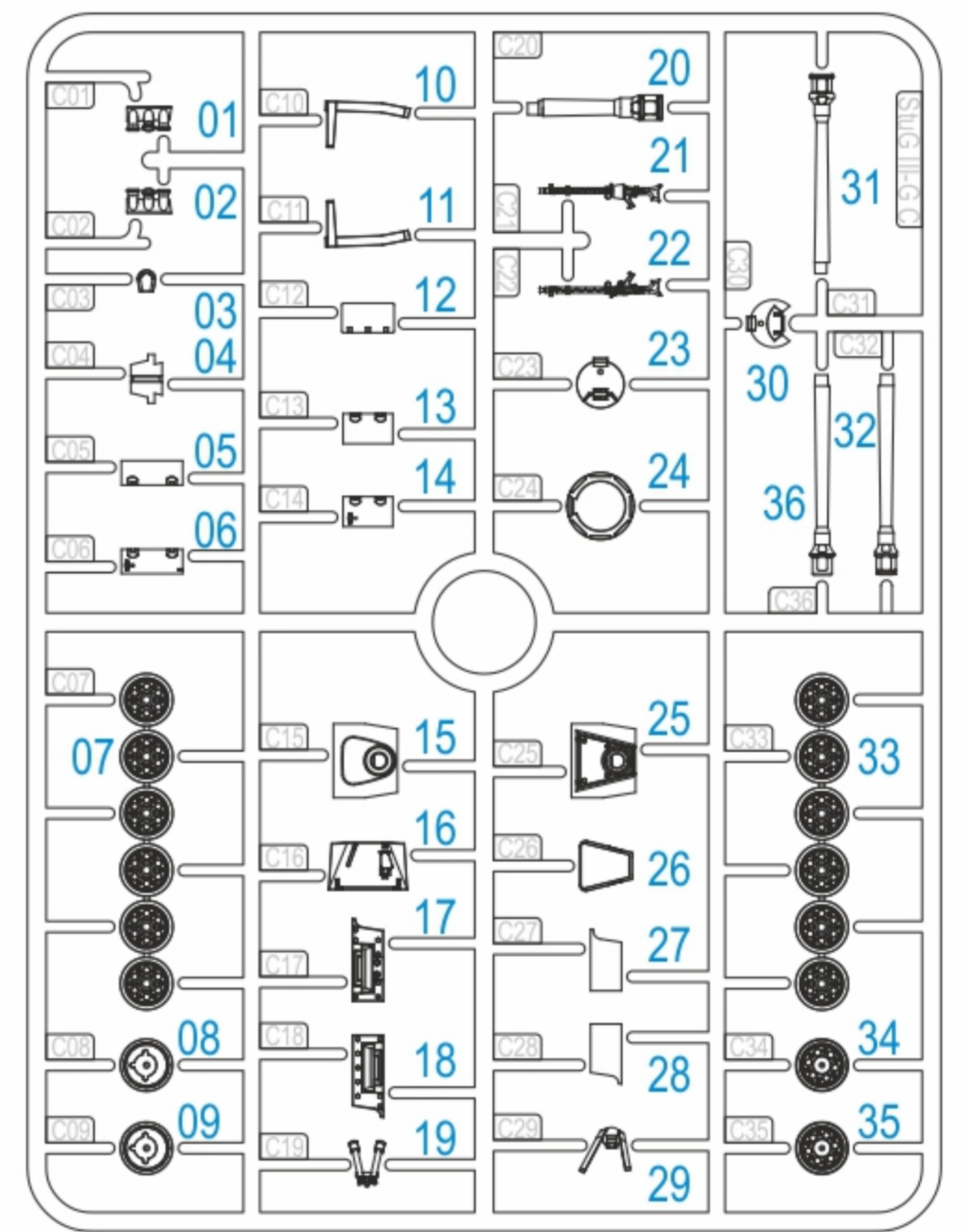
160325-1



A



B



C



CAUTION

- When you use glue or paint, do not use near a naked flame, and use in a well-ventilated area.
- When assembling this kit, tools including knives are used. Extra care should be taken to avoid personal injury.
- Keep out of reach of small children.

Read carefully and fully understand the instructions before commencing assembly. Model supplied unpainted. Bases, scenery, glue and paint not included. Meaning of symbols used:



Choices



Optional



No glue



Drill hole



Bend



Cut or trim with care

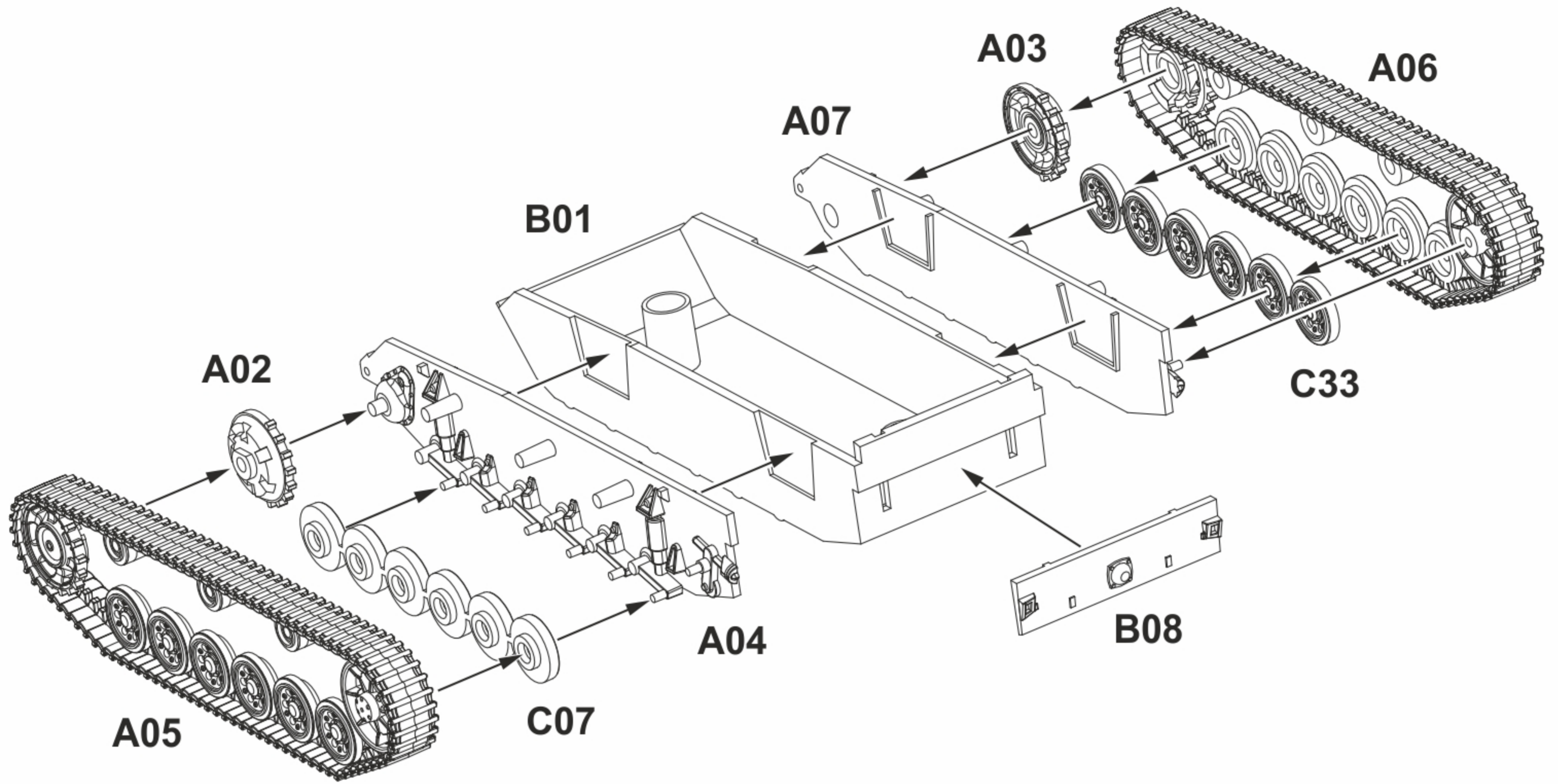


Please use **ABS Plastic Cement** for assembly.

WARNING

- THIS IS NOT A TOY
- INTENDED FOR COLLECTORS OF AGE 14 AND ABOVE
- CONTAINS SMALL PARTS AND POINTED COMPONENTS
- NOT SUITABLE FOR CHILDREN UNDER 6 YEARS OLD
- MODEL MAY VARY FROM IMAGE ON BOX
- READY TO ASSEMBLE PRECISION MODEL KIT

1

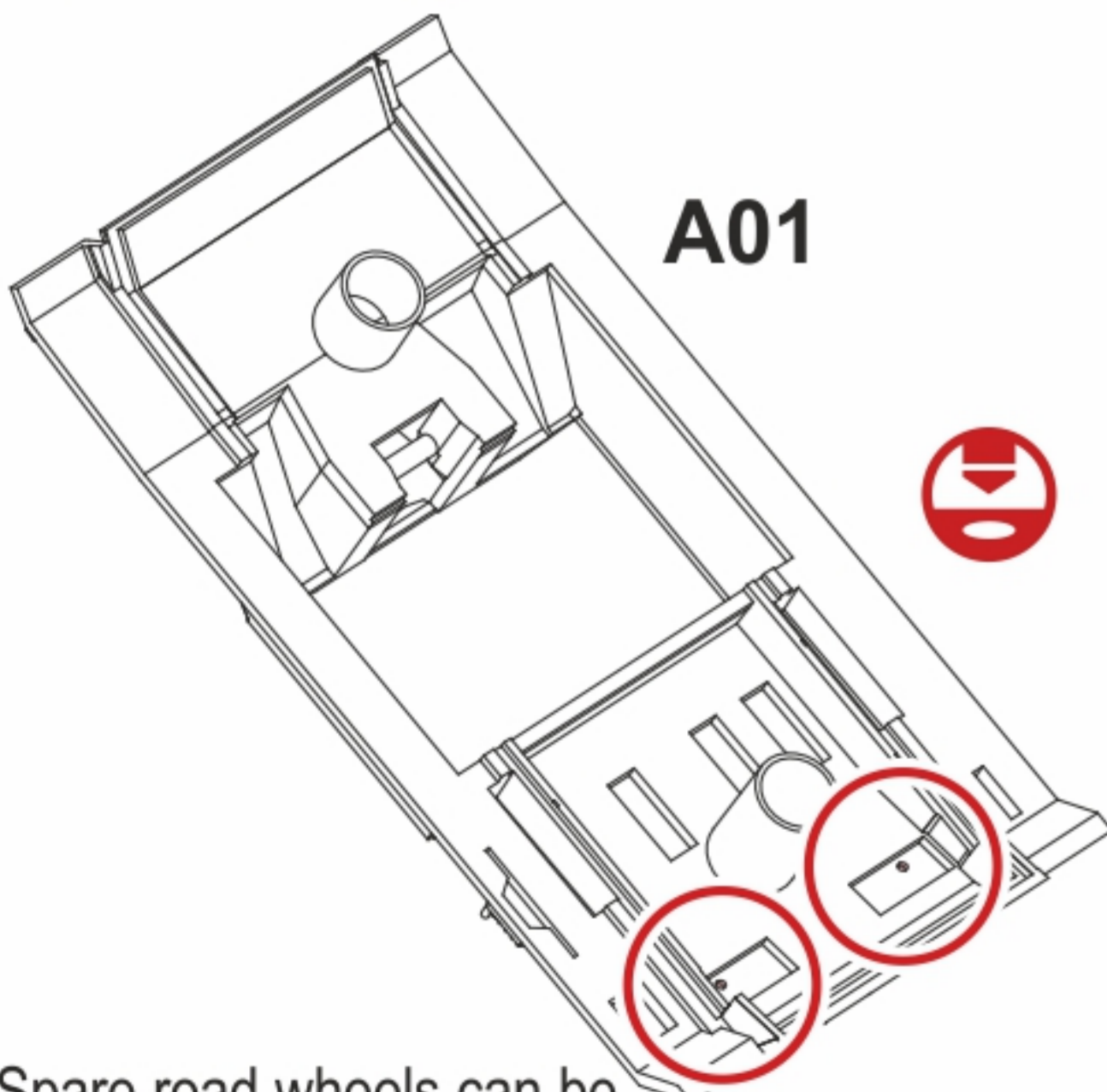


2

* Assemble C26 & C04 first **BEFORE** gluing A01 onto the lower chassis!

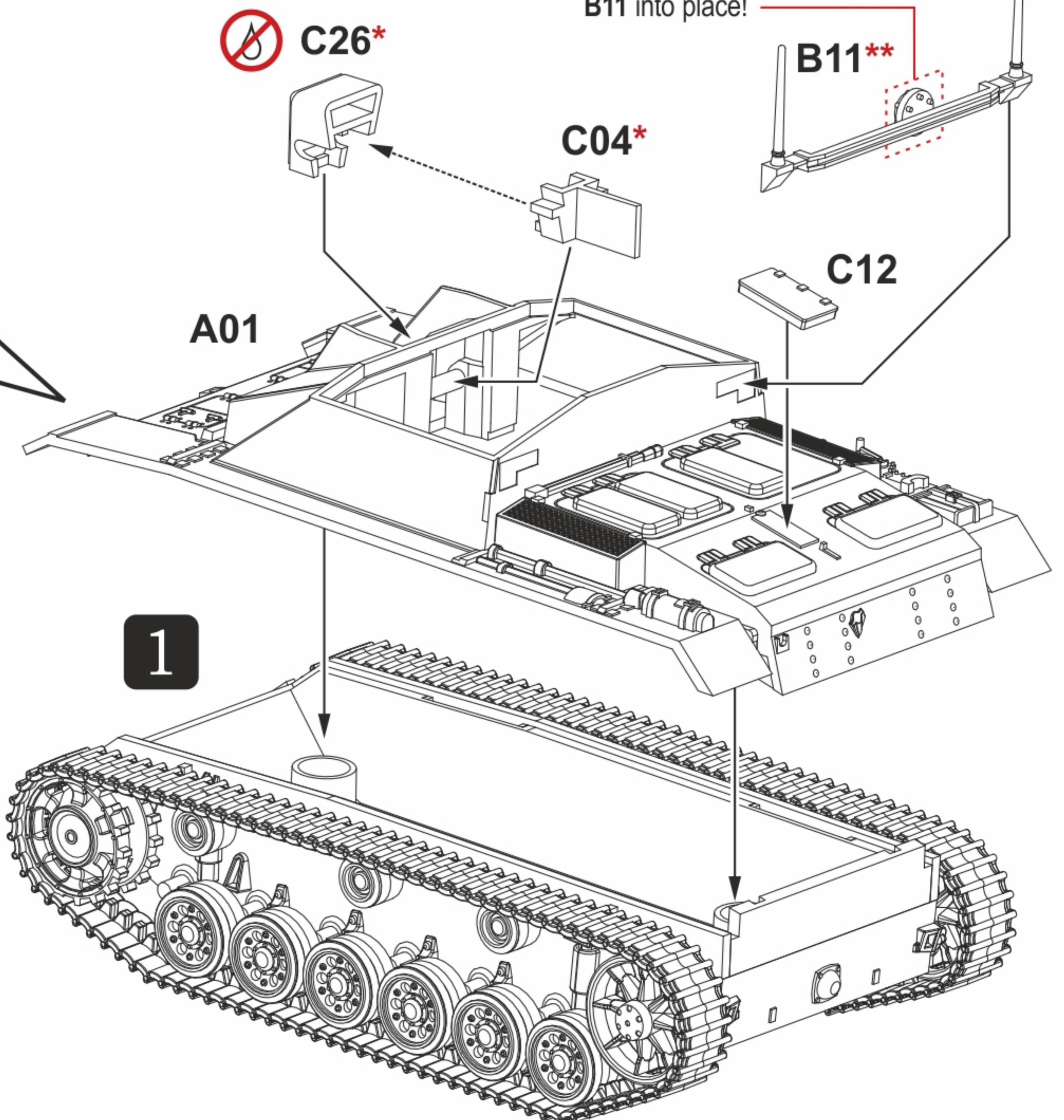
** Please **read** the design notes regarding air ventilator on **Page 4** before gluing B11 into place!

Spare Wheel Option #1



Spare road wheels can be mounted at the rear of the hull, just above the engine compartment. To do so, drill two small holes from the underside as indicated.

Another option is to mount the spare wheels onto the optional rear mount. Either on both sides or towards the back. Please see **5** for more information!



3

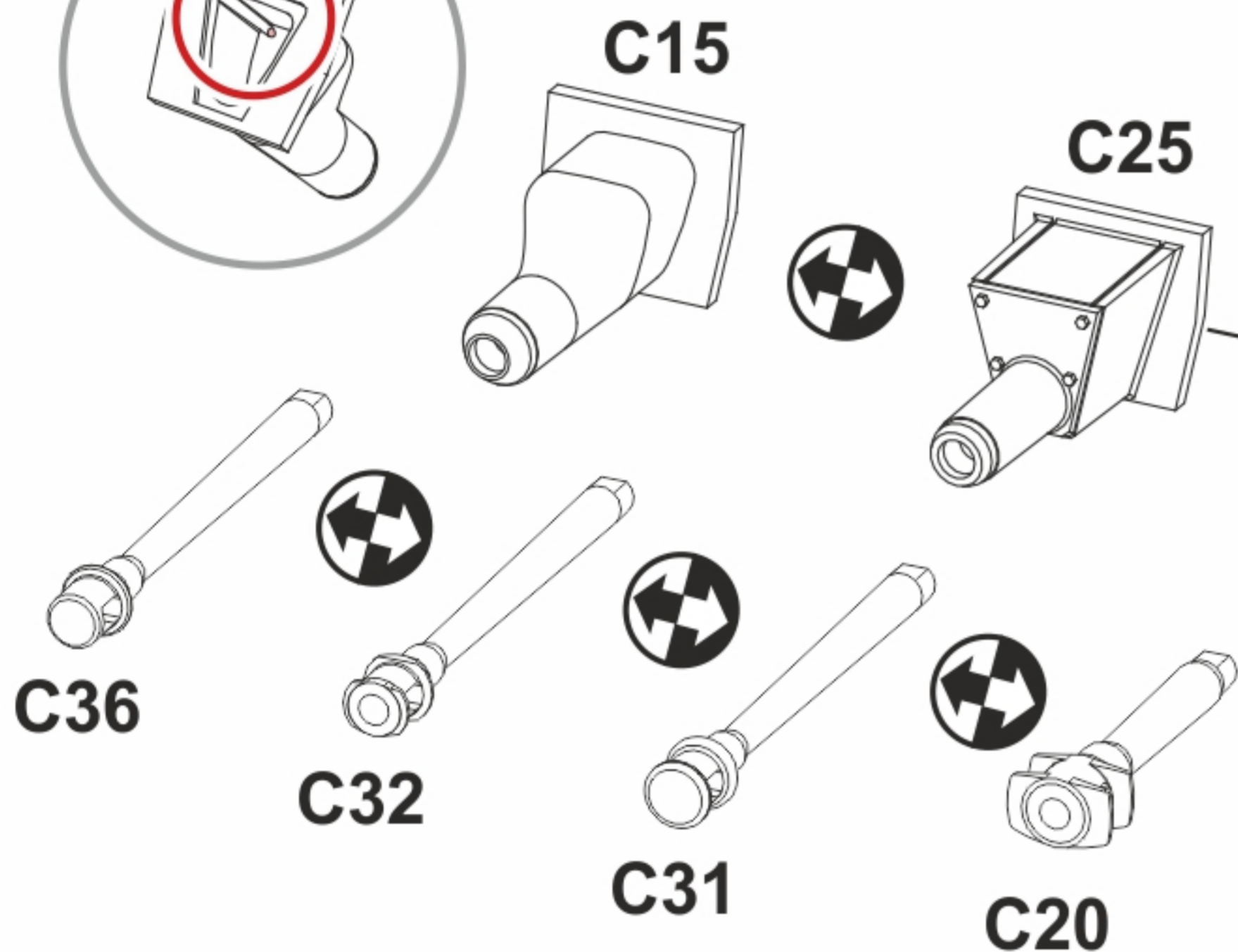
PLEASE READ THIS SECTION CAREFULLY BEFORE ASSEMBLY

Frontal Armour Choices: C28 + C17 - Early Production (from Nov 42)
C28 + C18 - Mid Production (from May 43)
C27 + C18 - Late Production (from Dec 44)

Gun Mantlet Choices:

C25 - Trapezoid-shape mantlet is used throughout production.

C15 - From Nov 43, some are fitted with the Topfblende pot mantlet (often called Saukopf "Pig's head") gun mantlet. From Oct 44, some are fitted with coaxial machine gun. Option to drill a hole from behind **C15** is available.



C03

2

C28

C27

C25

B12*

C17

C18

* Optional

Gun Barrel & Muzzle Brake Choices:

C36 - StuG III (7.5 cm StuK 40 L/48 cannon) with an **early** production muzzle brake
C32 - StuG III (7.5 cm StuK 40 L/48 cannon) with a **mid** production muzzle brake
C31 - StuG III (7.5 cm StuK 40 L/48 cannon) with a **late** production muzzle brake
C20 - StuH 42 with a 10.5 cm leFH 18 howitzer



HISTORICAL FACTS: The Sturmgeschütz III (**StuG III**) assault gun was Germany's most produced armoured fighting vehicle during World War 2, around **11,300** StuG IIIs and StuH 42s had been built. It was built on the chassis of the proven **Panzer III** tank, replacing the turret with a fixed casemate and mounting a more powerful gun. Initially intended as a mobile, armoured light gun for direct-fire support for infantry, the StuG was continually modified and was widely employed as a tank destroyer.

As the StuG III was designed to fill an infantry close support combat role, early models were fitted with a low-velocity 75mm StuK 37 L/24 gun to destroy soft-skin targets and fortifications. After the Germans encountered the Soviet KV-1 and T-34 tanks, the StuG III was first equipped with a high-velocity 75mm StuK 40 L/43 main gun (Spring 42) and in Autumn 42 with the slightly longer 75mm StuK 40 L/48 gun. These versions were known as the Sturmgeschütz 40 Ausführung F, Ausf F/8 and Ausf G.

4

Early Production
from Nov 1942

C06

C05

C24

B03

Late Production
from Oct 1944

C21

C13

C14

C24

C29

B02

C22

C16

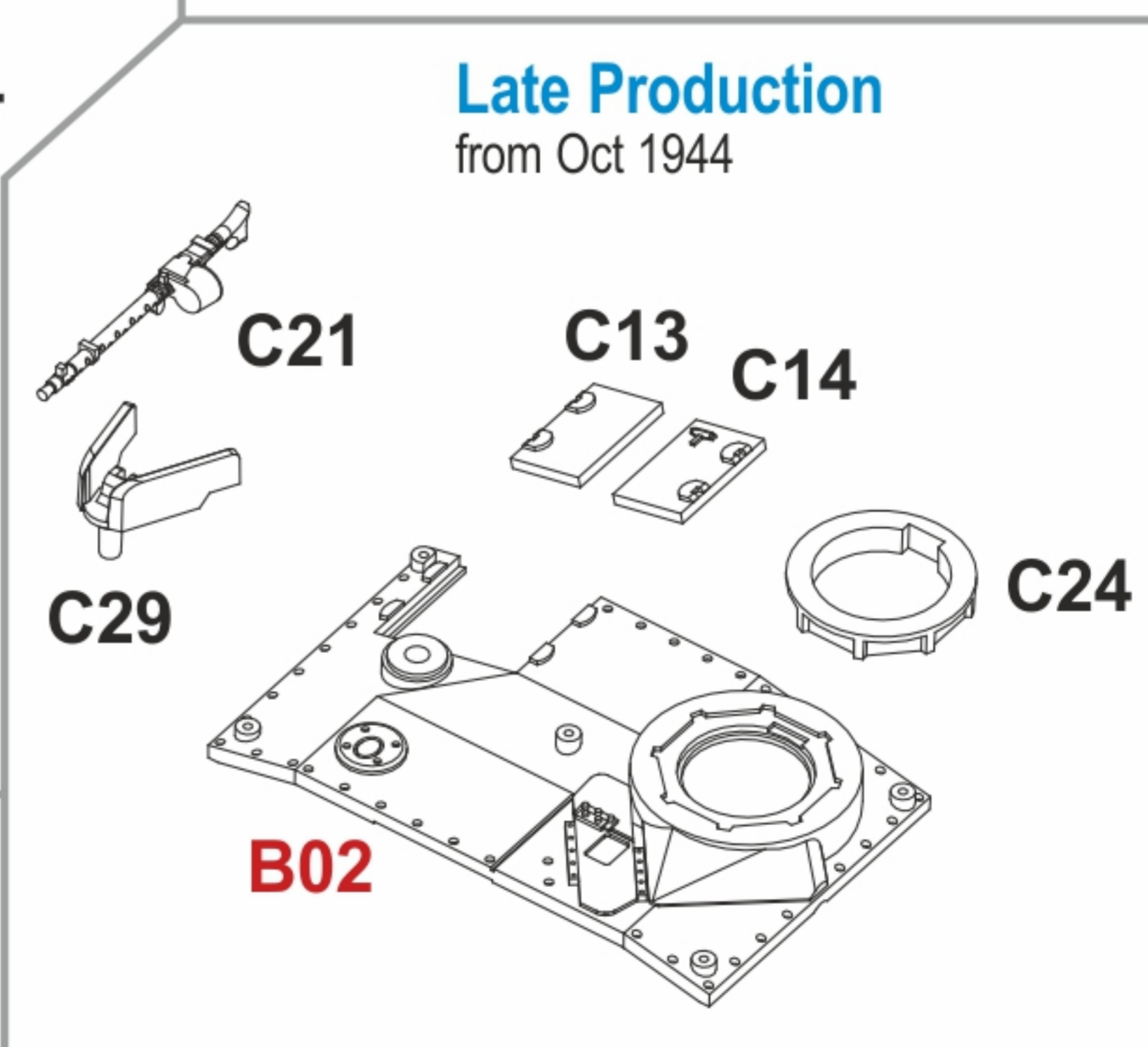
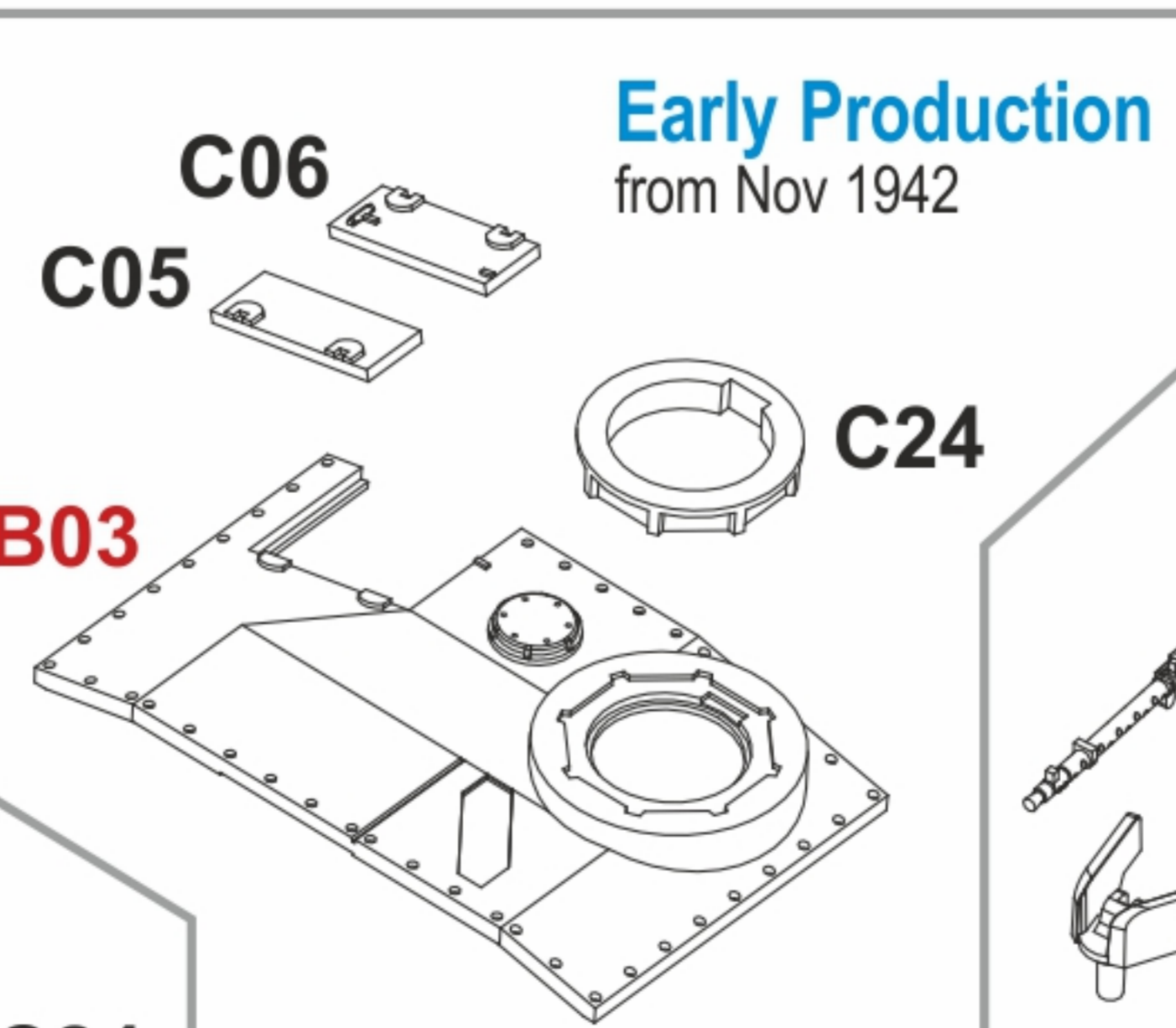
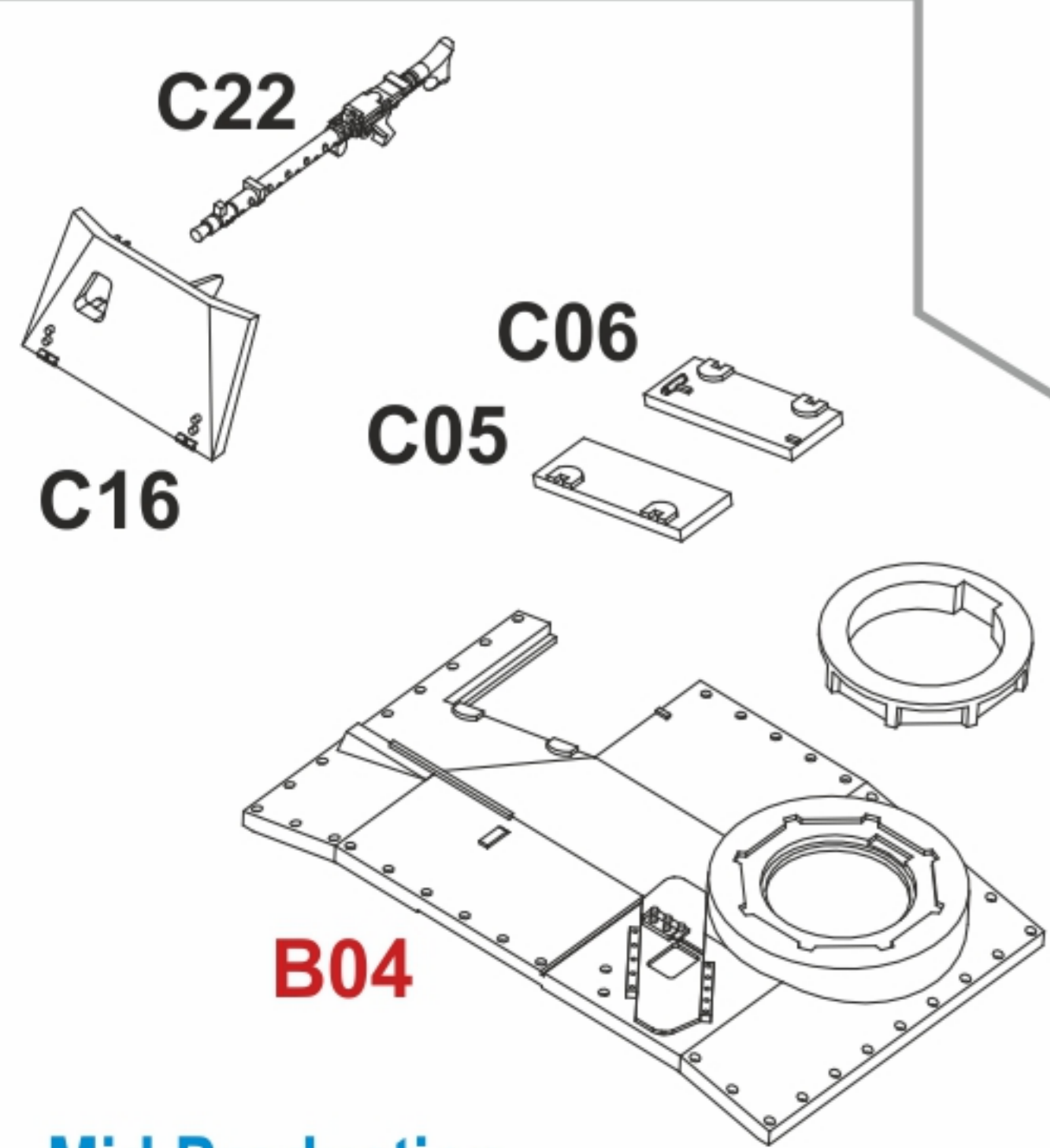
C06

C05

C24

B04

Mid Production
from May 1943



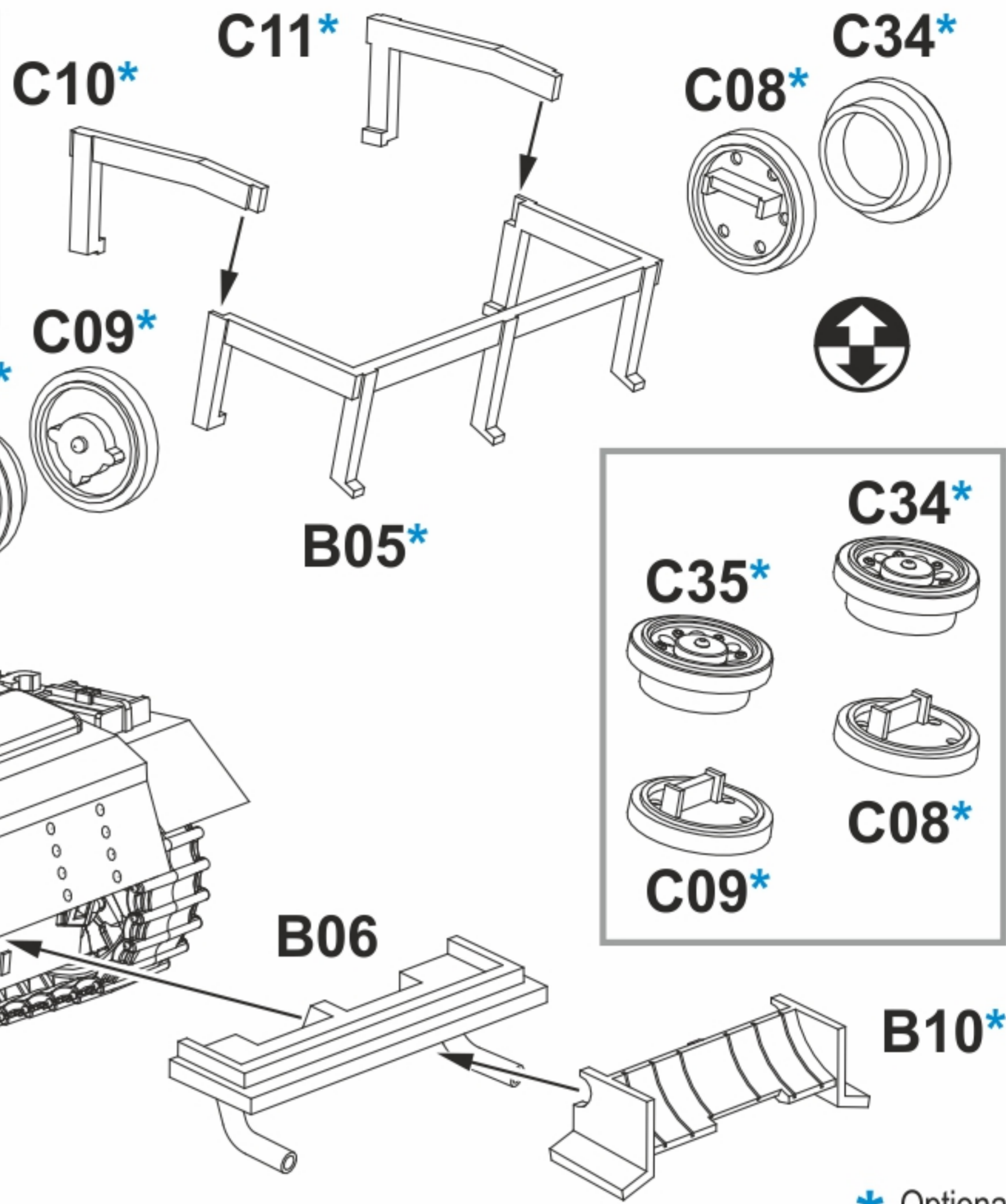
5

4

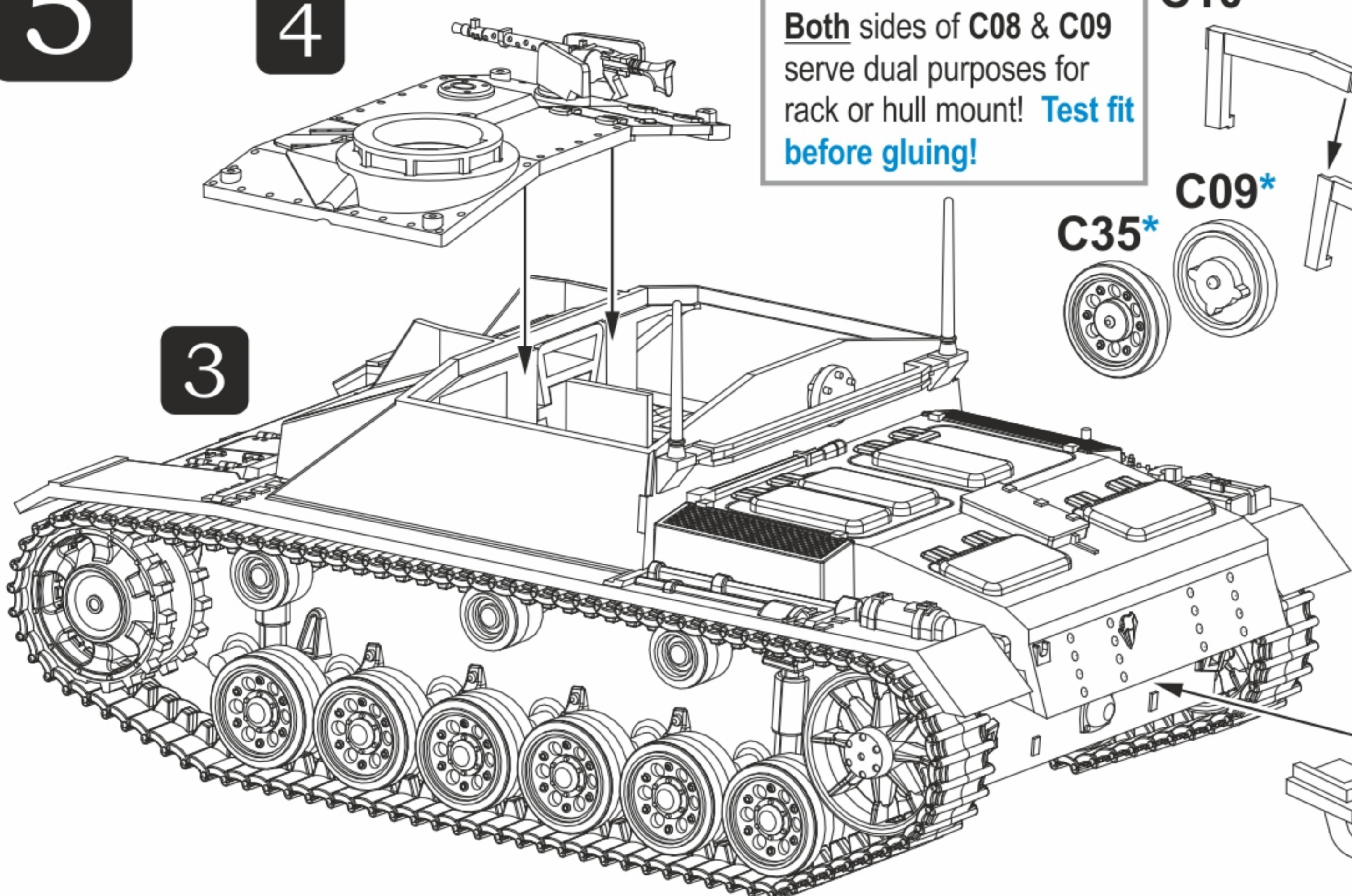
IMPORTANT ▶

Spare Road Wheels

Both sides of C08 & C09 serve dual purposes for rack or hull mount! **Test fit before gluing!**



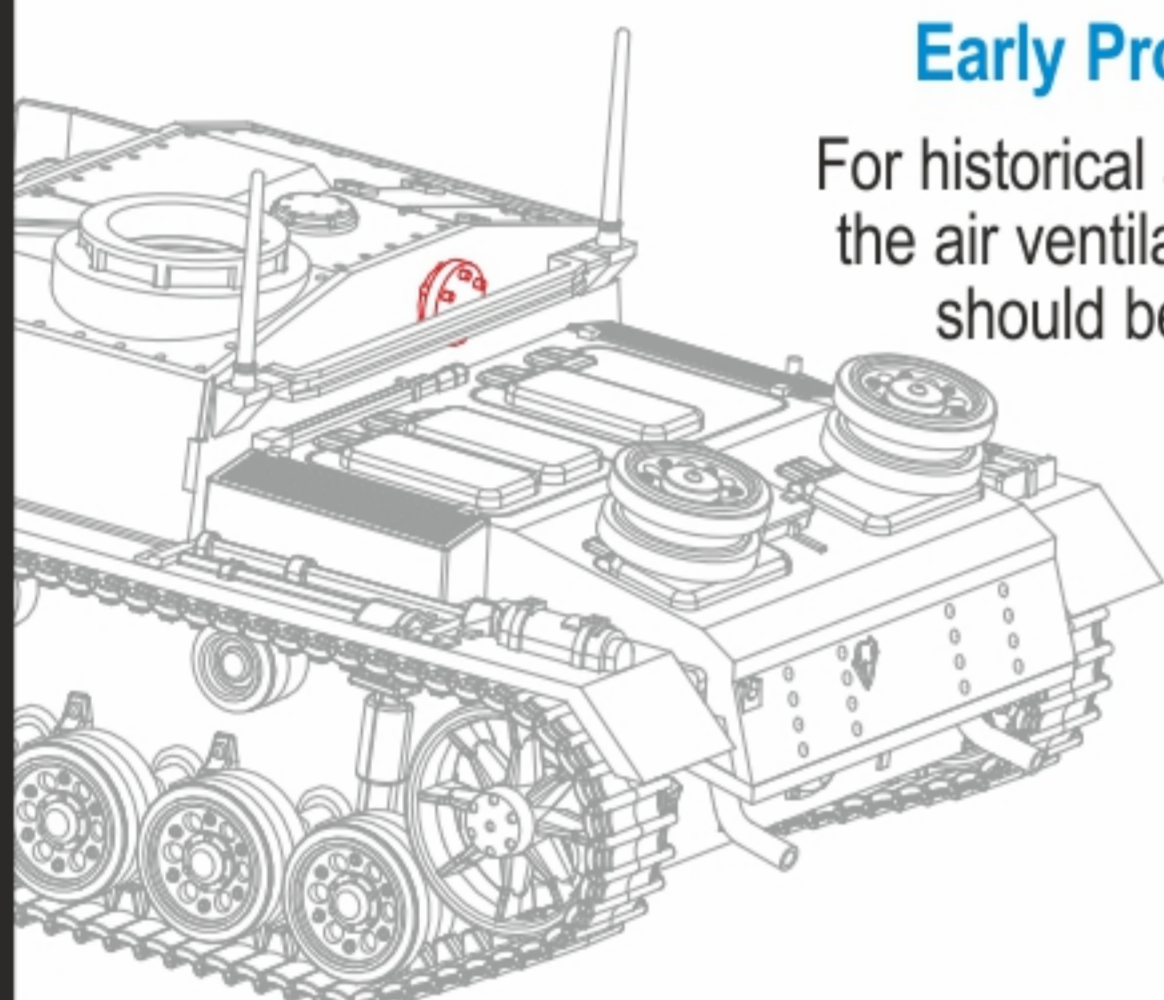
3



* Optional

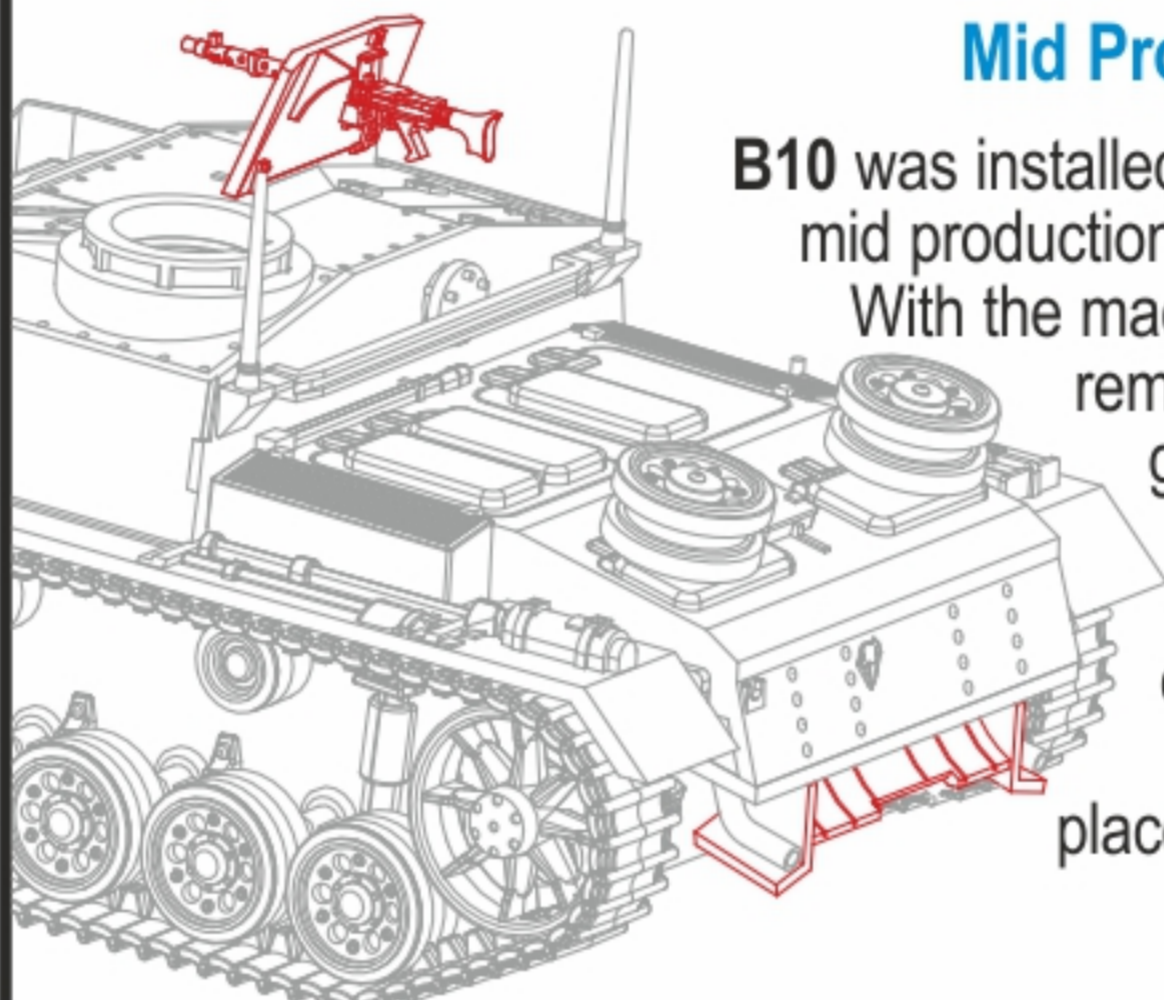
Early Production

For historical accuracy, the air ventilator (B10) should be omitted.



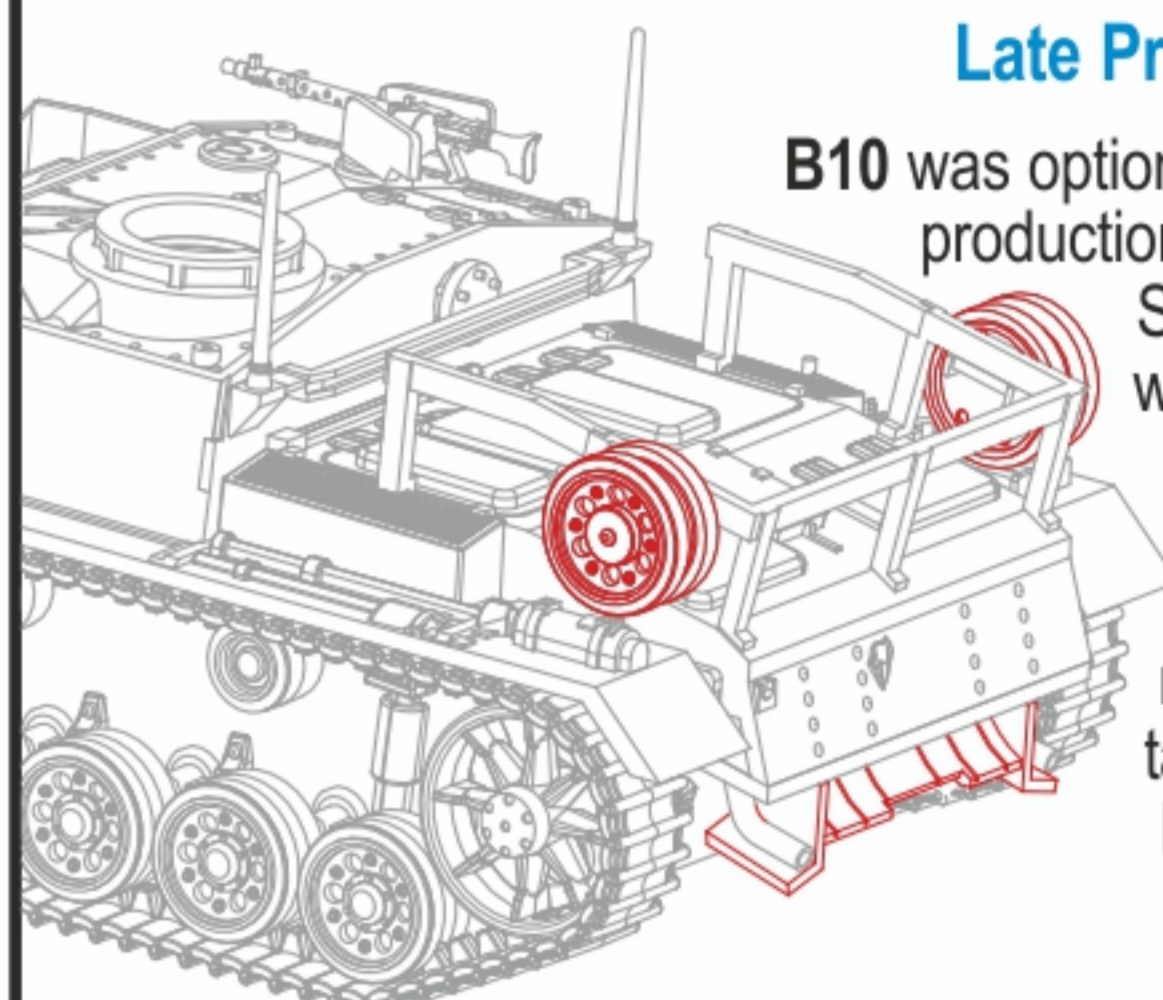
Mid Production

B10 was installed for most mid production variants. With the machine gun removed, the gun shield can be flipped down and glued in place instead.



Late Production

B10 was optional for late production variants. Spare road wheels can be glued as shown or at the rear of the tank facing backward.



6

B07*

C30

C19*

C23

Schürzen

From May 43, side hull skirts (schürzen) were fitted to G models for added armor protection, particularly against Russian anti-tank rifles, but were also useful against hollow-charge ammunition.

5

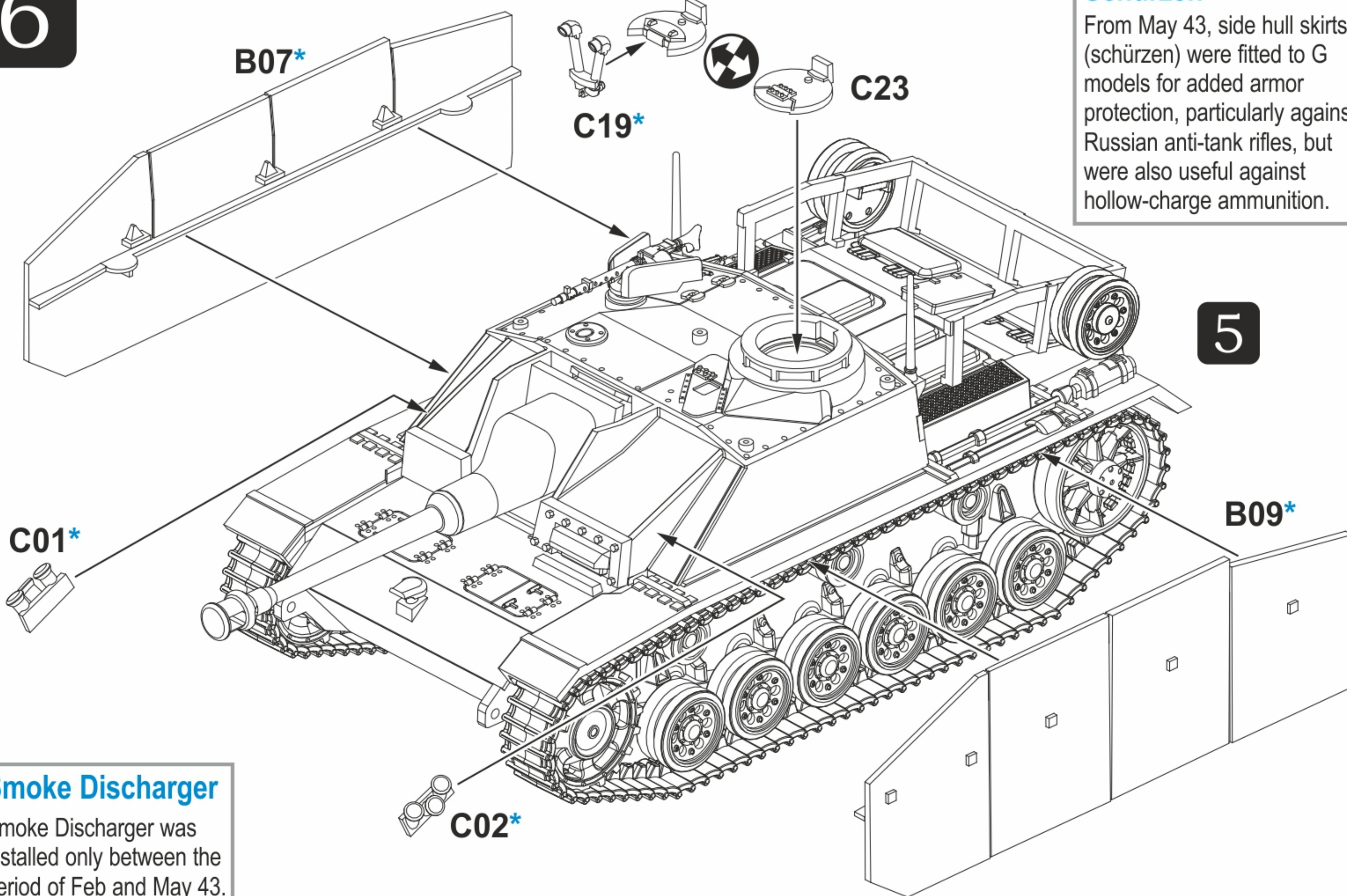
C01*

C02*

B09*

Smoke Discharger

Smoke Discharger was installed only between the period of Feb and May 43.



* Optional